



Cover:
Sam Smith
Untitled 2015
Acrylic on canvas

Project Art Works *at Stock Spirits*

STOCK SPIRITS GROUP is a leading owner and producer of premium branded spirits and liqueurs that are sold principally in Central and Eastern Europe. With a portfolio of more than 45 brands across a broad range of spirits, including vodka, vodka-based flavoured liqueurs, rum, brandy, bitters and limoncello, our core markets are Poland, the Czech Republic and Italy, and we export to more than 50 countries worldwide.

Stock Spirits Group have provided support to Project Art Works for a number of years, after hearing about the excellent work the charity does in its innovative approach to supporting severely intellectually disabled people. Participating in their “Art On Loan” programme is a great way to liven up our working environment, whilst also supporting a wonderful cause. A strong, ongoing partnership has the power to make a sustainable, long term impact, and we feel that by taking part in this initiative we can truly make a difference by helping to spread the word about Project Art Works and its mission.



PROJECT ART WORKS is the UK's leading visual art organisation working in collaboration with neurodiverse artists and makers. It is progressive, socially engaged and has a positive impact on the lives of children, young people and adults who have complex support needs.

The organisation is artist-led and promotes new practical and philosophical approaches to the meaningful involvement of its artists and makers in visual art activity that finds its way into mainstream cultural programmes and is of exceptional quality in its concept, aesthetic and production. Based in Hastings, Project Art Works collaborates with a wide range of local, regional and national partners from the arts, social care and business.

Project Art Works is one of the most inspiring organisations I have come across: ethically driven, intellectually rigorous, sensitive, dynamic, inventive and enterprising, the list could go on and on. They navigate the tricky terrain between art and social care with admirable skill, working uncompromisingly with both the visual arts and people with profound intellectual disability, to open up new and exciting possibilities in both areas.

Anthony Spira, Director, MK Gallery

Artist and Director, Kate Adams, MBE states 'Discovering new ways to connect with people is key to our work. This can range from establishing long-term relationships with individuals, their families and support networks and moves outwards to more formal partnerships with art galleries, businesses and government bodies. Our aim is to promote cultural and social inclusion for people and to celebrate their contribution to the communities in which they live through showcasing their work and creative abilities.'



Supported using public funding by

**ARTS COUNCIL
ENGLAND**



Jonathan Rogers
Abstract with Pink and Yellow 2010
Acrylic on paper



Sam Smith
Untitled 2013
Acrylic on canvas

ART ON LOAN

Project Art Works offers a range of opportunities to disseminate and share the work of their artists. A sponsored exhibition of artworks from the collection can brighten public and office environments whilst creating a positive and beneficial talking point for staff, guests and visitors. Built over a period of twenty years and containing over 4500 objects, the Project Art Works archive not only represents the rich history of the organisation but is also an inspirational collection of contemporary art available for loan.

The works in the collection consist largely of paintings, prints and drawings that encompass a diverse range of approaches to image making. The collection is constantly expanding and is a 'live' and vibrant resource.

Exhibition loans are curated in consultation with the staff of businesses and partners and tailored to each organisation's context. The exhibition package includes the transport and installation of the artworks, interpretation texts and labels, and a catalogue specific to the chosen artworks and partnership that includes biographical information on the featured artists and makers.

ALBERT GEERE



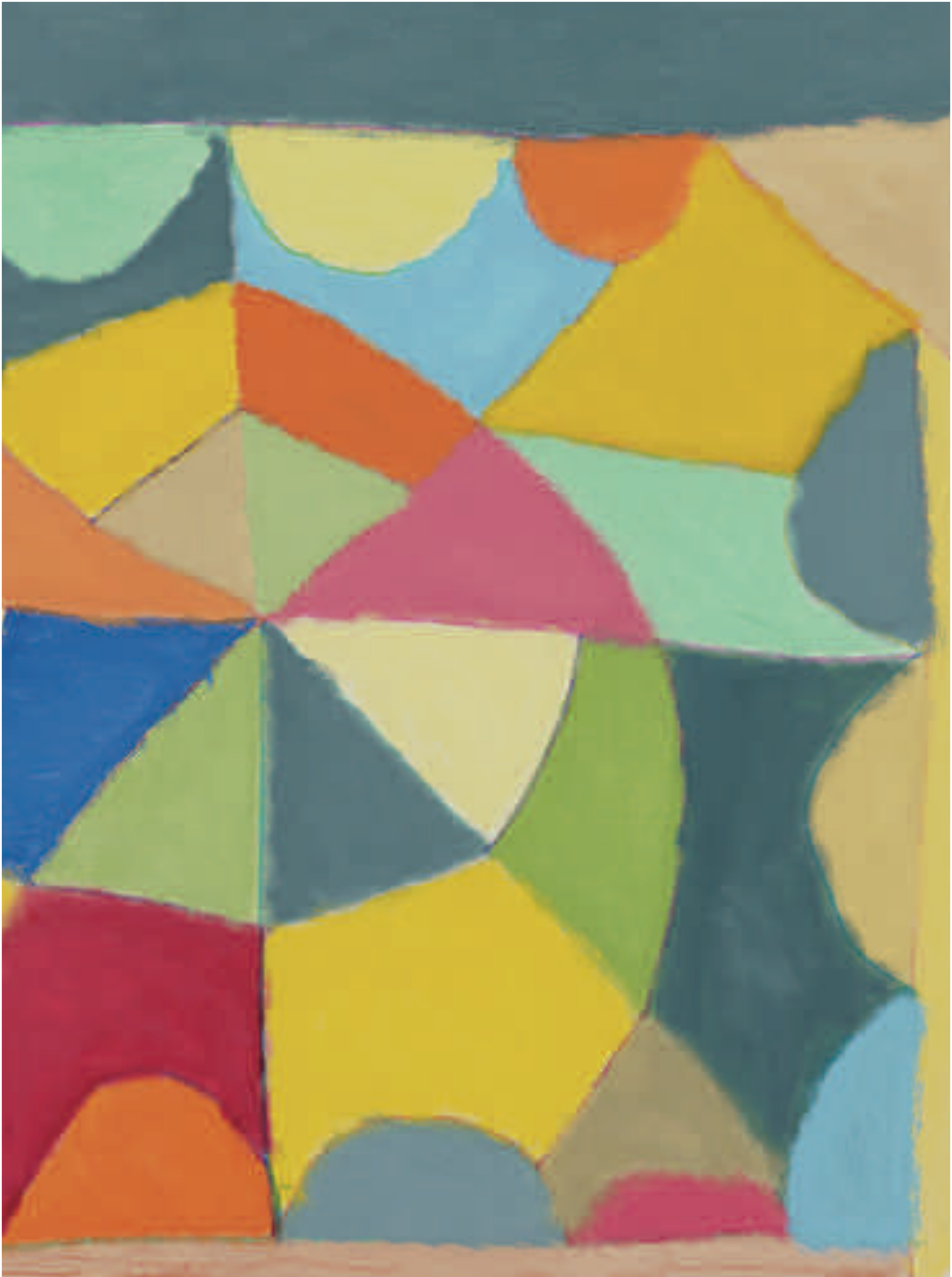
When visiting the studio on a weekly basis, Albert Geere was painting with great focus and intensity. Albert was meticulous and worked quietly and steadily for long periods without breaks. At home, Albert has a range of objects that he's passionate about, most notably, a collection of clocks and watches. These, alongside other favoured items, have at times entered Albert's work as subject matter but more often he paints from his imagination.



Albert Geere
Boat 2009
Acrylic on board

→
Albert Geere
Pattern no. 3/6a 2014
Acrylic on canvas







Jonathan H
Butterfly and Tree 1996
Etching



Unknown
Untitled 1996
Etching

SAM SMITH



Sam Smith engages with a wide range of different materials and processes. His signature squeeze paintings are made in swift and impulsive, yet considered moves. Sam often overworks his images using brushes and pens with a range of marks that fluctuate in between the delicate and robust. This pure physical interaction with materials has transformed Sam's practice from a curiosity for emptying out domestic pastes and cleaning products into a meaningful creative process.



Sam Smith
Untitled 2015
Acrylic on canvas



Sam Smith
Untitled 2013
Acrylic on canvas

JONATHAN ROGERS

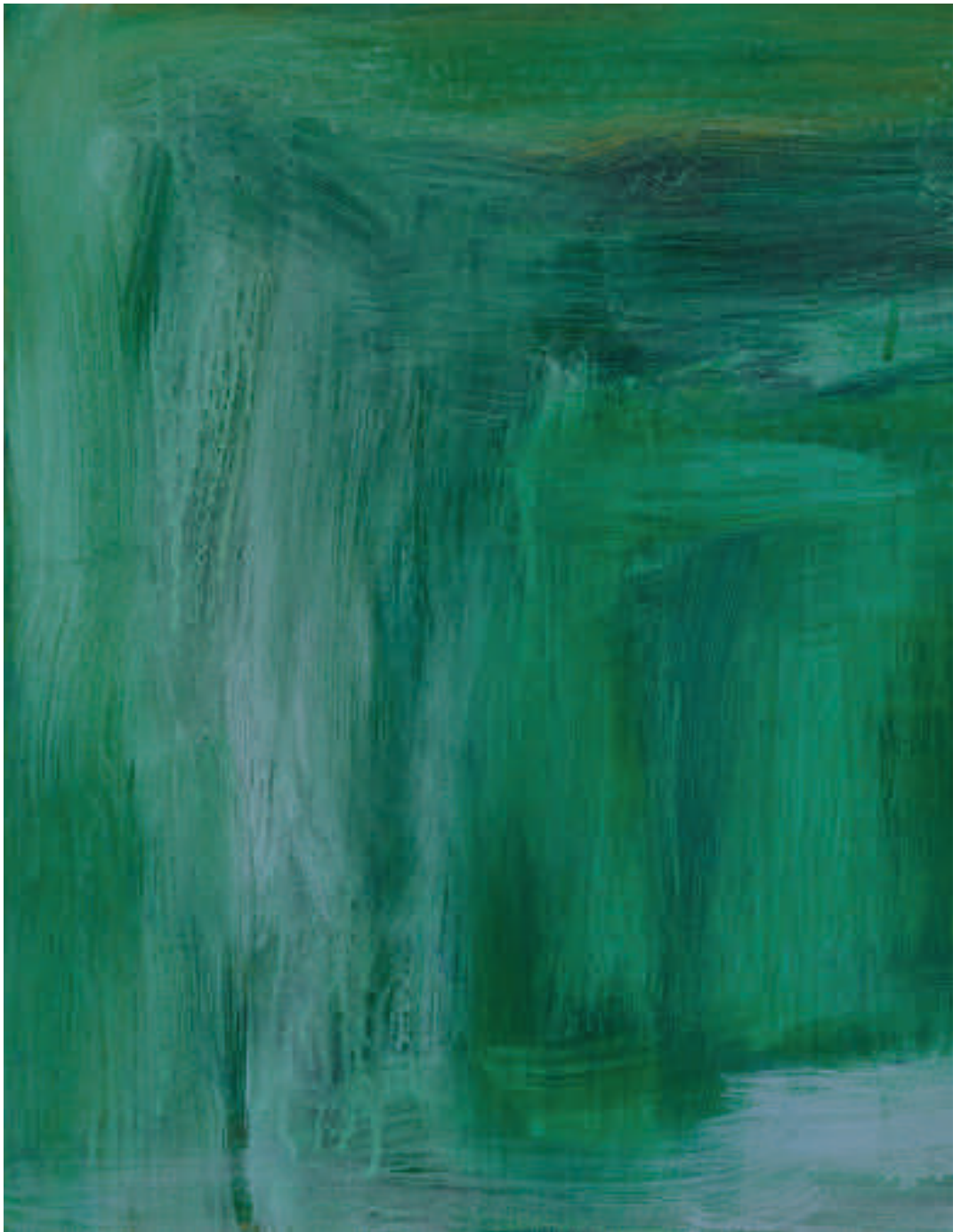


Jonathan Rogers creates paintings with vibrant washes of colours of various consistencies. Composed largely of vertical and horizontal sweeps worked and reworked across the canvas, his paintings develop gradually by building up layers of translucent marks. As part of the structure of his work, Jonathan frequently intersperses painting with a separate drawing activity, either on paper or in his sketchbook. These compositions in pencil depict characters and lettering revealing his personality and humour, sometimes referring to specific people or favourite food and drink.



Jonathan Rogers
Painting No. 44 2013
Acrylic on paper

→
Jonathan Rogers
Untitled 2010
Acrylic on canvas





STANLEY ELLIS



Stanley Ellis has been a participant in our workshops for two years. He has been exposed to a variety of materials and practices, including drawing, clay modeling, construction and collage. However, it is large-scale painting which seems to stimulate a high degree of concentration, energy and pride in Stanley.

Stanley's studio space is set up with a large canvas propped at a comfortable height and angle. A range of brushes of various shapes and sizes are set out on a trolley table to the right of the canvas.



Stanley Ellis
No. 4 2013
Felt pen and paint pen on paper

MICHELLE ROBERTS



Michelle Roberts has drawn and painted throughout her life, spending much of her free time drawing small, intricately worked, images in her sketch books as well as ideas for the canvases she produces in the studio sometimes over many days and weeks. Michelle has refined a dense and highly personalized approach to image making. Working methodically across each canvas, section by section, she creates colourful and complex worlds that each have a distinct logic and meaning.



Michelle Roberts
Walking the Dog 2016
Brush pen on paper



Michelle Roberts
Sealife 2010
Brush pen on paper

projectart works

Project Art Works
Arch 3, Braybrooke Terrace
Hastings, East Sussex
TN34 1TD
01424 423555
www.projectartworks.org

Follow us on twitter:
ProjectArtWorks

Comp Reg: 5115045
Charity No:1104301

