

# Local Art Stories

Making our walls a Force for Good

SAM SMITH





“ART  
IS NOT WHAT  
YOU SEE,  
BUT WHAT  
YOU MAKE  
OTHERS SEE”

EDGAR DEGAS

# Local Art Stories

Making our walls a Force for Good

As part of the commitment to serving our local communities through our **Force for Good** programme, **Premier Inn** is proud to launch a collaboration with **Project Art Works**: a visual arts organisation working with people who have complex needs. We are displaying eight original, vibrant pieces across our East Sussex hotel receptions and Support Centres.

Through this new project, **Local Art Stories**, our mission is to provide a national platform for these artists to tell their stories, and in doing so, ignite conversations between our guests and team members on inclusivity and diversity.

Force for  
GOOD Premier Inn 

## projectart works

Project Art Works is the UK's leading visual artist-led organisation working with people who have complex needs and the people, systems and services that support them.

Established in 1997, Project Art Works has worked with thousands of people with

complex needs and continues to offer advocacy, support and friendship to them and their families.

We run a regular year-round programme from our studios in Hastings and in the region for adults, young people, children and families. We also collaborate

with major cultural venues from across the UK to put on exhibitions and other inclusive cultural events.



Supported using public funding by  
**ARTS COUNCIL  
ENGLAND**

## SAM SMITH

Sam engages with a wide range of different materials and processes. His signature squeeze paintings are made in swift and impulsive, yet considered moves. Sam often overworks his images using brushes and pens with a range of marks that fluctuate in between the delicate and robust.

This pure physical interaction with materials has transformed Sam's practice from a curiosity for emptying out domestic pastes and cleaning products into a meaningful creative process unique to him.



### **Sam Smith** **Untitled**, 2015

Painting  
Acrylic and airdough on canvas  
122x122cm

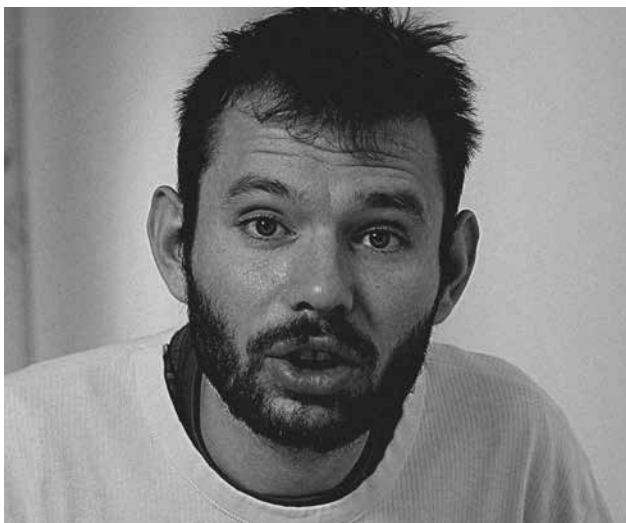
*On display at Premier Inn,  
Eastbourne (Polegate)*



## GEORGE SMITH

George Smith has developed a highly focussed but relaxed way of using paint. Initially he was wholly absorbed by tactile processes and created large scale works using his hands as his main tools. Of late, George works on mid scale canvases using a brush to apply paint sporadically throughout the day.

He will often sit next to a canvas for a long time before making a mark. But when this happens it appears highly spontaneous and unpressured by an over consideration of the result.



### **George Smith** **Untitled, 2016**

Painting  
Ink on canvas  
92x76cm

*On display at Premier Inn, Hastings*



## GEMMA

Gemma engages in physical painting using gesture in a joyful and celebratory way. She uses large, heavy brushes and applies bright colours to large surfaces. Her movements are sometimes dictated by the response to music she chooses and interactions with other artists.

Gemma produces works on paper and canvas simultaneously and vocalizes her responses with key phrases throughout the day.



### **Gemma** **Untitled, 2017**

Painting  
Acrylic and ink on canvas  
152.5x122cm

*On display at Premier Inn's Support  
Centre, Houghton Regis*



## MICHELLE ROBERTS

Michelle Roberts has drawn and painted throughout her life, spending much of her free time drawing small, intricately worked images in her sketch books as well as ideas for the canvases she produces in the studio, sometimes over many days and weeks.

Michelle has refined a dense and highly personalised approach to image making. Working methodically across each canvas, section by section, she creates colourful and complex worlds that each have a distinct logic and meaning.



### **Michelle Roberts** **Red Nose Day, 2015**

Drawing  
Brush pen on canvas  
91x122cm

*On display at Premier Inn,  
Newhaven*

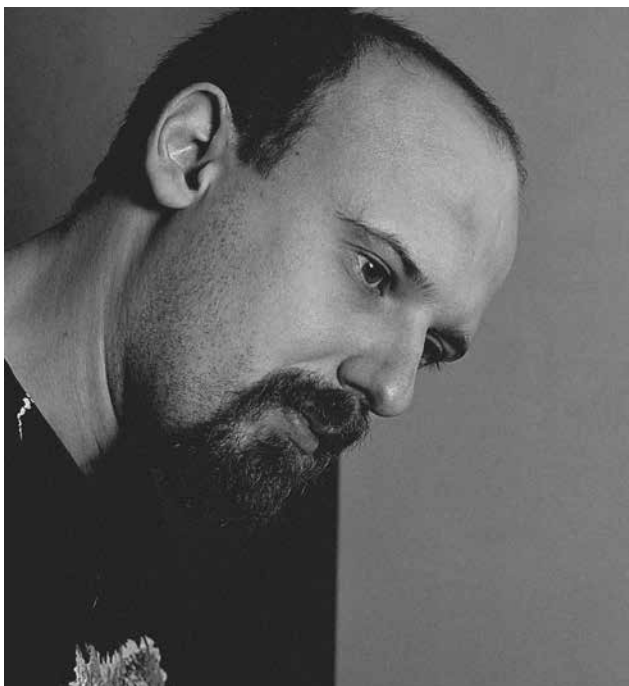




## DARRYL SPENCER

Darryl generally makes large-scale, abstract paintings. He is a prolific mark-maker with an intense preoccupation for viscose materials. He likes to paint using expressive and repetitive movements, rapidly covering his picture surface.

Darryl also draws, often using his own image and words in combination with his paintings.



### **Darryl Spencer** **Untitled, 2015**

Painting  
Acrylic on canvas  
41x41cm

*On display at Premier Inn,  
Eastbourne*



## CARL SEXTON

Carl works on multiple scales using paint pens, brushes and sponges to build images out of dense clusters of marks. His work embraces pattern and alongside his larger paintings, Carl creates an abstract language out of endless lists of words.

These are then meticulously cut, edited and collaged to create large complex drawings on canvas.



**Carl Sexton**  
**Untitled**, 2016

Painting  
Ink on canvas  
76x76cm

*On display at Premier Inn's London office, Holborn*



## MARION WILLIS

Marion works across a range of media; from drawing, painting, animation, filmmaking and photography. As well as engaging in collaborative activities, Marion loves working independently often creating a stack of drawings which she will later paint over with a large brush and plenty of water.

She also enjoys creating self-portraits using video projections, painting directly onto the projected surface with a loose gestural action.



### **Marion Willis** **Untitled, 2015**

Painting  
Ink and pencil on canvas  
102x102cm

*On display at Premier Inn,  
Tonbridge North*



## JONATHAN ROGERS

Jonathan creates paintings with vibrant washes of colours with various consistencies. Composed largely of vertical and horizontal sweeps worked and reworked across the canvas, his paintings develop gradually by building up layers of translucent marks. As part of the structure of his work, Jonathan frequently

intersperses painting with a separate drawing activity, either on paper or in his sketchbook. These compositions in pencil depict characters and lettering revealing his personality and humour, sometimes referring to specific people or favourite food and drink.



### **Jonathan Rogers** **Painting No: 71, 2015**

Painting  
Acrylic on canvas  
41x51cm

*On display at Premier Inn, Maidstone  
(Leybourne)*



---

## THANK YOU

To the Project Art Works artists, Premier Inn team members and to everyone involved in making Local Art Stories happen.

**Project Art Works** has a large collection of artworks and paintings by these and other artists. To find out more contact Project Art Works on 01424 423555 or [info@projectartworks.org](mailto:info@projectartworks.org)





**Premier Inn**  
[premierinn.com/local-art-stories](https://premierinn.com/local-art-stories)

For press enquiries, please  
contact: [premierinn@golin.com](mailto:premierinn@golin.com)

projectart works

**Project Art Works**  
Tel: 01424 423555  
[Projectartworks.org](https://Projectartworks.org)  
[@ProjectArtWorks](https://twitter.com/ProjectArtWorks)

Reg charity no. 1104301