

projectart works

# EXPLORERSproject

ART, RIGHTS, REPRESENTATION SEMINAR  
Reflecting the lived experience

Friday 30 November 2018, De La Warr Pavilion, Bexhill



Programme of events

Image:

Solarprint of Fahima from Create Day Centre, Autograph Encounter Workshop, November 2017

# projectart works

## ART, RIGHTS, REPRESENTATION

Reflecting the lived experience

Friday 30 November 2018 10am – 5pm

A day of discourse and action to explore care and curatorial practice.  
Find out more about the Explorers Project at [www.explorersproject.org](http://www.explorersproject.org)

- 10.00 Refreshments: Teas and Coffees served in the Main Foyer
- 10.30 **Welcome**  
Stewart Drew (Director and Chief Executive, DLWP)
- 10.35 **Project Art Works, Explorers and Reimagining the Seminar**  
Kate Adams (Artist Director and CEO, Project Art Works)
- 10.45 **Makaton Introduction**  
Jackie Powell (Makaton tutor) and James Powell (Student)

## ART

- 11.00 **Visible, Equal, Established**  
Ella Ritchie (Director, Intoart)
- 11.20 **CONVERSATIONS ABOUT ART**  
Michelle Roberts (Artist, Project Art Works), Patricia Finnegan (Lead Artist, Project Art Works)  
Ossie Omorogbe, Hannah Chapman (Artists)  
Andrew and Eden Kötting, Leila McMillan (Artists)
- 12.00 **ART: VERBAL/NON-VERBAL CONVERSATIONS** (end times vary)
- Public Conversation - Inclusive Commissioning and Curating** (Auditorium, 12.00–12.40)  
Autograph ABP: Holly Tebbutt (Deputy Director), Lucy Keany (Public Programme Manager)  
Photoworks: Shoair Mavlian (Director), Juliette Buss (Learning and Engagement Curator),  
Claire Wearn (Programme Manager)
- Drawing-as-Conversation Workshop** (Auditorium Foyer, 12.00-12.50)  
Tim Corrigan (Creative Director, Project Art Works), Patricia Finnegan (Lead Artist, Project Art Works)
- Non-Verbal Communication Activity** (Rooftop Foyer, 12.00-12.30)  
Melanie Jukes (Shared Lives Carer) and Peter Standen (Student)
- A Tale Of Mother's Bones: Gallery Walkabout** (Ground Floor Gallery, 12.00-12.30)  
Lucy Walker (Artist, Project Art Works) and Tom Lepora (Artist Facilitator, Project Art Works)
- 12.30 – 1.20 Lunch: In the Café Bar

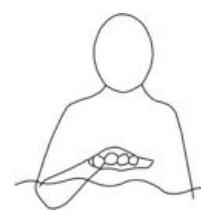
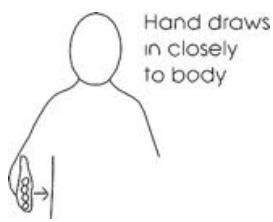
## RIGHTS

- 1.10 **Peer Support Network Charter of Ambition and Rights for Personalisation Launch**  
Esther Springett (Community Networks Coordinator, Project Art Works)
- 1.20 **Rights and Human Behaviour**  
Vivien Cooper (Chief Executive, Challenging Behaviour Foundation)
- 1.45 **RIGHTS: VERBAL/NON-VERBAL CONVERSATIONS** (end times vary)
- Quality Standards for People with Complex Needs - Why it Matters** (Auditorium, 1.45-2.10)  
Michael Fullerton (Clinical Director, Care Management Group)
- Open Discussion - Charter of Ambition and Rights for Personalisation** (Auditorium Foyer, 1.45-2.30) Esther Springett (Community Networks Coordinator, Project Art Works) with Mandy Rapisarda (Parent carer and representative of Peer Support Network)
- Rights and Creative Accessibility - Solar Printing Photography Workshop** (Rooftop Foyer, 1.45-2.35) Tim Corrigan (Creative Director, Project Art Works), Patricia Finnegan (Lead Artist, Project Art Works)
- A Tale Of Mother's Bones: Gallery Tour** (Ground Floor Gallery, 1.45-2.20)  
De La Warr Pavilion TBC
- 2.20 Break: Teas and Coffees in the Main Foyer

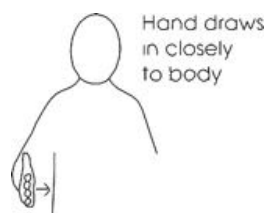
## REPRESENTATION

- 2.50 **The Lived Experience**  
Richard Williams (Chief Executive, Options for Supported Living)
- 3.15 **REPRESENTATION: VERBAL/NON-VERBAL CONVERSATIONS**
- Collaboration, Agency, Communication, Representation** (Auditorium)  
Mikhail Karikis (Co-commission Artist, De La Warr Pavilion, Project Art Works)
- Makaton is for fun too** (Auditorium Foyer)  
Jackie Powell (Makaton tutor)
- Who shut the door? We'll open it! A talk about shows, jobs, luck and love** (Rooftop Foyer)  
Sarah Hamlett (Team Leader), Kate Harper, Nicole Duchesne (Dancers) and Christine Howland (Service Manager), Ambito Care, The Sharon Collins Resource Centre, Brighton)
- A Tale Of Mother's Bones: Gallery Walkabout** (Ground Floor Gallery)  
Lucy Walker (Artist, Project Art Works) and Tom Lepora (Artist Facilitator, Project Art Works)
- 3.50 **Panel Question and Answer Session**
- 4.20 **Closing Comments**  
Kate Adams (Artist Director and CEO, Project Art Works)
- 4.30 Drinks Reception in the Main Foyer

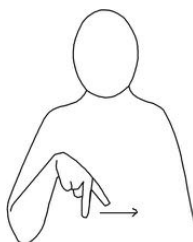
# Makaton signs for 'I Do Like To Be Beside The Seaside'



I do like to be beside the seaside



I do like to be beside the sea



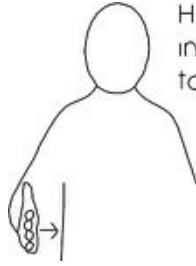
I do like to stroll upon the prom, prom, prom



Where the brass band plays tiddley-om-pom-pom



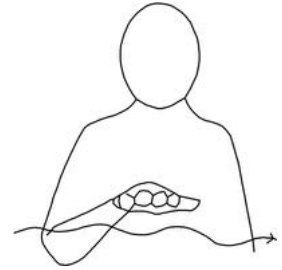
So just let me



be

Hand draws in closely to body

beside



the

seaside

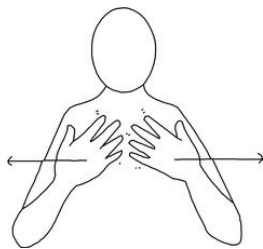


I'll be beside myself



with

glee



For there's lots of



gulls

beside



I

should

like



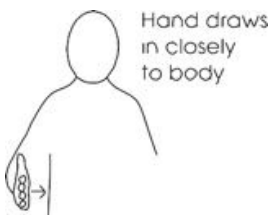
Pat chest gently

to be



Hand draws in closely to body

besides



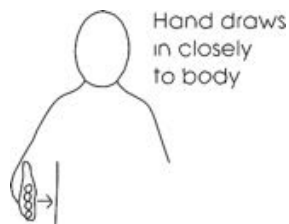
Hand draws in closely to body

Besides

the



seaside



Hand draws in closely to body

beside



the

sea

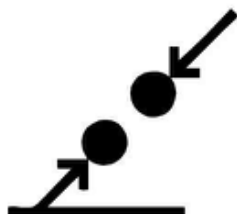
Symbols for 'I Do Like To Be Beside The Seaside'



I



like



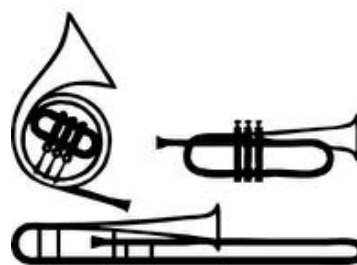
beside



seaside/sea



walk/stroll



brass band



music



me



happy



gull

# CONTRIBUTORS

## **Stewart Drew, Director and CEO, De La Warr Pavilion Charitable Trust**

Having studied Prints and Drawings at Camberwell College of Arts, Stewart worked at the Museum of London and Crafts Council, before joining the Pavilion management team shortly before it re-opened in 2005.

He became Director & CEO in 2012 and has been responsible for a wide range of projects including Richard Wilson's Cultural Olympiad rooftop commission, Warhol is Here, Fiona Banner: Buoys Boys, Cerith Wyn Evans and Peter Blake.

Stewart has also been involved in the development of live programming, bringing the Pavilion's auditorium back into regular viable use, and in the development of Outlands, the new national experimental music touring network. He worked closely with Project Art Works on the development of In the Realm of Others in 2015.

[www.dlwp.org.uk](http://www.dlwp.org.uk)



## **Kate Adams MBE, Artist Director and CEO, Project Art Works**

Kate Adams is an artist, advocate and parent activist. She has initiated many responsive, collaborative projects with children and adults who have complex support needs and their families, care services, artists and galleries.

Kate co-founded Project Art Works in 1997 to explore an expanded conception of art that was and continues to be influenced by her son, Paul Colley. Project Art Works collaborates with many individuals who have complex needs and their circles of support. The work embraces highly personalised studio practice, Peer Support and public exhibitions that raise awareness and influence diverse representation in civic and cultural life. Kate is a member of the south east regional council for Arts Council England and was awarded an MBE for services to art and disability.



## **Paul Colley, Influencer of things**

My name is Paul Colley. I do not use language to communicate but this does not mean I don't communicate, I do in lots of ways: behaviour, gesture, sounds and distinct preferences for stuff – aeroplanes and helicopters, busy, people-watching environments, music (a wide range) and for certain people like Dan, one of many incredible friends who are also called 'support workers', Yaa, and my uncle Graeme.

I like to make choices everyday about what I do and to change my mind sometimes and this means I need support that is personalised, adaptive and flexible. My life and my family's response to the forces that impact on it (and theirs) has influenced Project Art Works, its ethos and development. I don't like painting anymore but I do enjoy directing a creative interaction with photographs of people – familiar and unfamiliar. *The above was written by mother – therefore not a totally objective or precisely reflective account of my perception of things.....*

### **Jackie Powell, Makaton tutor**

I became a Makaton tutor in 2006 having used signing to support my son who has autism and communication delay. I am co-chair of a preschool group called Shine and Sign which promotes the use of Makaton with children who have delayed speech. I run courses in the community with Autism Train entitled Understanding Autism and Reducing Challenging Behaviour for Children with Autism.



### **James Powell, Student**

I am eighteen years old and have autism. I go to East Sussex College. I volunteer once a week at RSPB Dungeness. I like nature, going on holiday, trains especially steam trains. I like making Lego kits, crafting, doing jigsaws and riding my bike.



### **Ella Ritchie, Director, Intoart**

Ella Ritchie is Director and co-founder of Intoart. For the past 18 years, she has committed her practice to Intoart, nurturing its growth and ambition. Alongside Intoart, her experience in the field of art and education spans initiating long-term inclusive art projects working with children and young people on the Autistic Spectrum; facilitating youth and community forums; as an artist working within residential settings and lecturer in Higher Education. [www.intoart.org.uk](http://www.intoart.org.uk)

### **Michelle Roberts, Artist**

Michelle Roberts has drawn and painted throughout her life, spending much of her free time drawing small, intricately worked, images in her sketch books as well as ideas for the canvases she produces in the studio sometimes over many days and weeks. Michelle has refined a dense and highly personalized approach to image making. Working methodically across each canvas, section by section, she creates colourful and complex worlds that each have a distinct logic and meaning. [www.projectartworks.org/makers/michelle-roberts](http://www.projectartworks.org/makers/michelle-roberts)



### **Patricia Finnegan, Lead Artist, Project Art Works**

Patricia has been working as a freelance artist and educator for over fifteen years. Her practice focuses on elements of painting and printmaking and in 2010 she completed an MA in Art and Design in Education. She combines practice-based research with her work as an artist facilitator on a wide range of projects with neurodiverse artists and makers. Patricia is highly committed to exploring new routes to inclusion in the arts as she believes this is essential in improving the mental, emotional and physical wellbeing of everyone. Patricia is currently the lead artist on Activate Parachute and assistant artist for supported studios at Project Art Works.

### **Ossie Omorogbe, Artist**

### **Hannah Chapman, Artist**

Ossie and Hannah have developed a strong creative working relationship together over a number of years at The Platform in Brighton.



### **Eden Kötting, Artist**

Eden Kötting loves to paint objects that she has chosen for a still life set-up but sometimes she might also choose to paint images from her head. Her visual impairment influences the way she sees the world and she has worked hard to develop her abilities to look carefully at what she sees. She carefully plans out her drawings in pen or pencil before adding plenty of colour. Working in the studio she continues to expand her range of mark making as well as her painting skills. She has collaborated with her father, artist and film maker Andrew Kötting, on numerous projects for both the cinema and the gallery and together with him she has produced a large body of work around the themes of 'Still Life'.

[www.projectartworks.org/makers/eden-kotting](http://www.projectartworks.org/makers/eden-kotting)

### **Andrew Kötting, Artist**

Andrew Kötting was born in Elmstead Woods and went on to become a failed Lumberjack in the forests of Scandinavia. He trained at the Slade in London under Stuart Brisley, specialising in performance with film and painting. His most recent feature film *Lek And The Dogs* was made in collaboration with the playwright Hattie Naylor and a short film to accompany it was made with his daughter Eden and the animator Glenn Whiting. He is a Professor of Time Based Media at UCA and now lives by the sea in St Leonards and is often seen in it.

[www.andrewkotting.com](http://www.andrewkotting.com)

### **Leila McMillian, Artist**

Leila is a jack-of-all-trades and mistress-of-some. With a background in fine art and a degree in sculpture she is also an accomplished knitter, seamstress and fiddle-smith.

She moved to St Leonards on Sea in 2005 and made contact with Project Art Works whilst looking for activities for her daughter Eden – a keen artist with learning disabilities. After first working as an artist on a few projects she is now the resident archivist – although she loves getting the occasional chance to spend time in the studios with the makers.



### **Holly Tebbutt, Deputy Director, Autograph**

Holly joined Autograph in 2013. She has 30 years of experience working with visual arts organisations as former Head of Visual Arts at London Arts Council, a programme leader in higher education, as a research consultant and in senior executive roles. Alongside her role at Autograph, she is a Trustee of both London Print Studio and ACME, both of which provide production facilities for artists.

[www.autograph.org.uk](http://www.autograph.org.uk)



### **Lucy Keany, Public Programme Manager (Events and Projects), Autograph**

Lucy is a visual arts public programme interested in exploring how the politics of social justice and human rights can be applied to the arts and working with audiences/participants. Since completing her MFA at Edinburgh College of Art (2008). Lucy has undertaken programming roles within a variety of visual arts organisations including Edinburgh Art Festival, Street Level Photoworks and Autograph since 2014.

[www.autograph.org.uk](http://www.autograph.org.uk)



### **Shoair Mavlian, Director, Photoworks**

Shoair Mavlian is director of Photoworks and curated the 2018 Brighton Photo Biennial. From 2011-2018 she was Assistant Curator, Photography and International Art at Tate Modern, where she curated major exhibitions including 'Shape of Light: 100 Years of Photography and Abstract Art' (2018) and 'The Radical Eye: Modernist Photography from the Sir Elton John Collection' (2016). Shoair's recent independent curatorial projects include the exhibition 'Don McCullin: Looking Beyond the Edge' (Les Rencontres d'Arles, 2016) and 'In flux' (Kanellopoulos Cultural Centre, Greece, 2015 and Getxo Photo 2017). Shoair has a background in fine art photography practice and the history of photography, focusing on the twentieth century.



### **Juliette Buss, Learning & Engagement Curator, Photoworks**

Juliette is responsible for Photoworks' Learning and Engagement programme and has nearly twenty years experience of working in the visual arts, heritage and education sector with a strong track record in fundraising, strategic development, commissioning, multi-agency project management and evaluation. Previous freelance work includes large-scale research and evaluation projects, programme management, and developing learning resources for teachers. Clients have included NESTA, Wellcome Trust, Towner Gallery, De La Warr Pavilion, Clore Duffield Foundation, V&A, Turner Contemporary and the BFI. Juliette is an Editorial Advisory Board member for Engage (Journal).

[www.photoworks.org.uk](http://www.photoworks.org.uk)



### **Claire Wearn, Programme Manager, Photoworks**

Claire Wearn is a freelance producer who has been working in visual arts for over 15 years and with a particular focus in photography. Claire has a background in community arts and participatory practice and mainly works in collaboration with commissioners and artists to produce multi-partnership projects and commissions. Previous work includes Black Country Stories with Multistory and Martin Parr (2010-2014); Open for Business with Multistory and Magnum Photos (2011); Pictures from America: Rochester with Magnum Photos (2012); HOUSE Biennial (2015 - 2017); Brighton Photo Fringe (2016) and most recently she worked with Photoworks to manage the eighth edition of Brighton Photo Biennial and Jerwood/Photoworks Awards (2017-18).



### **Tim Corrigan, Creative Director, Project Art Works**

Tim Corrigan is an artist filmmaker. He has extensive experience of video production both as a cameraman and editor, both in the arts and across the broadcast media and business sectors. He has worked with children and adults with learning disabilities and with behaviours that challenge for 20 years and has delivered and led workshops and programmes for Project Art Works since 1998.



### **Peter Standen (Student)**

My name is Peter Standen, I'm 19 and I like the mobile game 'Need for Speed: No Limits', I just can't wait for 'Wreck-It Ralph 2' to come out on 30 November 2018. I am a student at East Sussex Coast College Hastings and I want to get a job at Curry's PC World and I am learning to be more independent. (I'm excited about getting paid to do this talk).



### **Melanie Jukes (Shared Lives Carer)**

My name is Mel Jukes, I'm 46 and I love being a Shared Lives Carer. I used to be an Assistant Head at Glyne Gap Special School, and my special interests are people, ways of communicating, autism and neuro-diverse ways of processing. I have the perfect job, which is simply a way of life and I am learning to embrace Pokemon, Dinosaur King and House of Anubis. (I don't know if I'll get there).

### **Lucy Walker, Artist**

Lucy is an artist and maker. Lucy enjoys drawing, dressing up as different characters (mainly dogs) making puppets and small characters (like the Osmonds and the cast of M\*A\*S\*H), playing drums in a band, Delta 7 and writing scripts that are played out via her puppets.



### **Thomas Lepora, Artist facilitator, Project Art Works**

Thomas is an artist and painter and maker and breaker. He has a varied working background from mental health (ICU and community settings) to boat restoration and third sector environments.

Thomas' own art practice focuses on interpersonal relationships with people who have been marginalised in society. Making connections and building trust is key to his work. He uses found materials to produce objects that are either kept, recycled or gifted to the person who enjoys them the most. Thomas also runs workshops for people who are in home education. These are centered around making and collecting materials that can be made into something or broken, depending on what is wanted. 'It's all about the process.'



### **Esther Springett, Community Networks Coordinator, Project Art Works**

Esther joined the Project Art Works team as Community Networks Coordinator for the PROPEL programme.

Esther is a socially engaged artist and enjoys different approaches to art making that lead to surprising collaborations and build social connectedness. Esther is an advocate for her sister who has profound and complex needs.

As an artist educator and project manager, Esther has over 10 years experience working on diverse programmes for Hayward Gallery, Southbank Centre, De La Warr Pavilion, Bexhill, Towner Art Gallery, Eastbourne and Dv8 Sussex. Esther has worked as a filmmaker with Bouffant Collective and Anti-Ghost Moon Ray and has screened her films at BFI London and the Barbican Centre. She studied Critical Fine Art Practice BA(Hons) (2009) at the University of Brighton and gained a PGCE in Post-compulsory Education (2013).



### **Mandy Rapisarda, Parent carer and representative of Peer Support Network**

Growing up in London, I was an avid swimmer. My dream job, a mounted police officer, but I worked in administration and stores in the West End of London; commuting by motorbike (a safe option considering my once having fallen under a moving train!). I have trained to drive large vehicles, been the Merchandise Manager for House of Fraser, coordinated the casualty eye clinic at Eastbourne's DGH, married, lived and worked in Italy. Settling back in England, I had two children. A son (grown up and independent) and a daughter who has autism and complex needs, who likes to be independent, and can be.

To provide my daughter her further education, I secured a personal budget; designed and created an individualised programme of provision tailored to her interests and supporting the direction she wishes to explore.

It was necessary to relinquish my work to become an employer and to support my daughter in her journey toward her future whilst she works to achieve her full potential.



**Vivien Cooper, Chief Executive Officer, The Challenging Behaviour Foundation**

Viv is the parent of a young man with severe learning disabilities who displays a range of behaviours described as challenging, some of which are life-threatening. In 1997 Viv founded the Challenging Behaviour Foundation (CBF), a small national charity providing information and support to professionals and families caring for individuals with severe learning disabilities and behaviour described as challenging ([www.challengingbehaviour.org.uk](http://www.challengingbehaviour.org.uk)). Viv participates in groups and networks at a local, regional and national level. The CBF established the Challenging Behaviour – National Strategy Group which Viv chairs. Viv was awarded an OBE for services to families and people with severe learning disabilities.

[www.challengingbehaviour.org.uk/](http://www.challengingbehaviour.org.uk/)



**Michael Fullerton, Clinical Director, Care Management Group**

Michael is a learning disability nurse, working as Clinical Director for CMG. CMG provides support to adults with learning disabilities and/or autism in supported living, outreach or residential services.

Michael has been involved in the development of specific service standards focused on supporting children and adults with profound and multiple learning disabilities. These standards are designed for providers and commissioners to ensure people with profound disabilities receive excellent support, in educational, health or social care settings.

Michael is also responsible for quality assurance at CMG, and focused on ensuring staff are well trained and are focused on ensuring people have a good quality of life.

[www.cmg.co.uk](http://www.cmg.co.uk) [www.pmlmlink.org](http://www.pmlmlink.org)

**Richard Williams, Chief Executive, Options for Supported Living**

Hi I'm Richard, Chief Executive of Options since 2002. I'm a Northern Irishman, married to the lovely Ruth for over 30 years with two fabulous boys Sam and Callum, and an energetic young collie called Josh. My hobbies include Tranmere Rovers, climbing, running, and learning French. I work for Options because I believe that everyone matters – people with disabilities, their families, our staff and the communities we are part of. And I believe passionately in everyone's potential and want to see that realised. Many of the people Options supports are described as difficult to support. Options is committed to staying small but becoming brilliant.

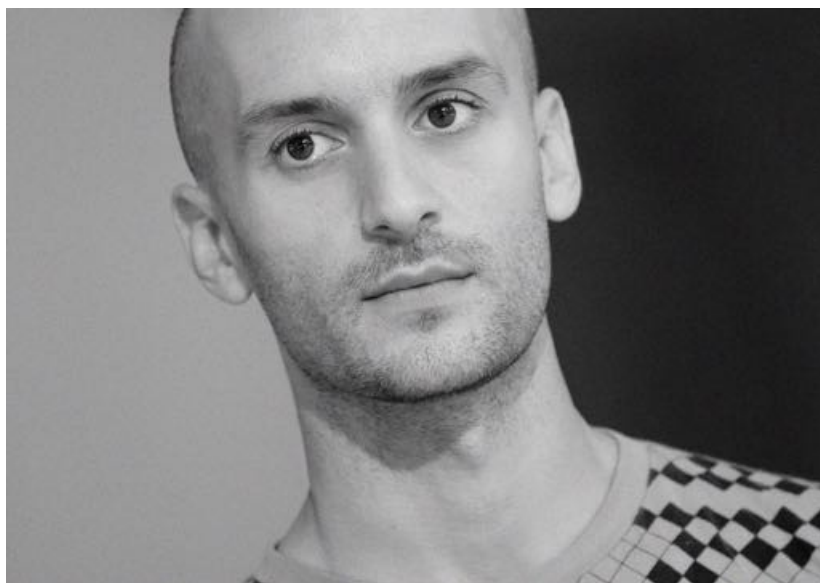
[www.optionsforsupportedliving.org](http://www.optionsforsupportedliving.org)



## **Mikhail Karikis, Artist**

Mikhail Karikis is a Greek/British artist whose work embraces moving image, sound, performance and other media. Karikis' work emerges from his long-standing investigation of the voice as a material and a socio-political agent. He often collaborates with communities pushed to social or/and geographic margins to generate projects that highlight alternative modes of human agency, existence and solidarity.

Karikis' work is exhibited internationally including at No Ordinary Protest, Whitechapel Gallery, London, UK (2018); Ain't Got No Fear, Turku Art Museum, FI (2018); The Chalk Factory, Aarhus 2017 European Capital of Culture, DK; Children of Unquiet, Villa Romana, Florence, IT (2014) and elsewhere. In 2019, Karikis will realise solo exhibitions at Fondazione Sandretto Re Rebaudengo, Turin, IT; MORI Art Museum, Tokyo, JP; Middlesbrough Institute of Modern Art, UK; and will develop a new project with the De la Warr Pavilion and Project Art Works.  
[www.mikhailkarikis.com](http://www.mikhailkarikis.com)



**Sarah Hamlett (Team Leader), Kate Harper, Nicole Duchesne (Dancers) and Christine Howland (Service Manager), Ambito Care, The Sharon Collins Resource Centre (SCRC) – a day service in Brighton**



Sarah is a Team Leader at SCRC – Sarah takes a lead in liaison with other services/organisations and arranging activities and events within the service. Sarah was also the founder of Fan Dance Theatre Company and The Magic Chocolate Show  
Kate attends SCRC and is a dancer with Fan Dance Theatre Company and The Magic Chocolate Show  
Nicole attends SCRC and is a performer with Fan Dance Theatre Company and The Magic Chocolate Show  
Christine Howland is the Service Manager of our day service, with a diverse background in disability arts, positive behaviour support and communication.

Our centre is based in the heart of Brighton and has been running since the 1950's, meaning we have been playing a really important role in our local community for people with a range of disabilities over this vast time. At present, we are an activities day centre in the heart of Brighton. We have a range of activities, among the most popular are Fan Dance Theatre Company and The Magic Chocolate Show – two performing arts companies who perform regularly at places like Brighton Fringe, local festivals and local schools and colleges. These companies are the closest thing some of our participants within our service would relate to as an occupation, and much of what we will discuss today will be about our work in these companies. But it will also be about our centre, our overall purpose and our position in social care. We will discuss what battles we face and how we overcome barriers when they are presented to us.

Event Time		Auditorium	Auditorium Foyer	Rooftop Foyer	Gallery
10.00	<b>REFRESHMENTS</b> Tea and coffee available in the Main Foyer				
10.30	<b>WELCOME</b>	Stewart Drew			
10.35	<b>INTRODUCTION</b>	<b>Project Art Works, Explorers and Reimagining the Seminar</b> Kate Adams			
10.45	<b>GROUP MAKATON</b>	<b>Makaton Introduction</b> Jackie Powell and James Powell			
11.00	<b>ART</b>	<b>Visible, Equal, Established</b> Ella Ritchie			
11.20	<b>CONVERSATIONS ABOUT ART</b>	Patricia Finnegan and Michelle Roberts Hannah Chapman and Ossie Omorogbe Andrew and Eden Kötting, Leila McMillan			
12.00	Verbal/Non-Verbal Conversations	<b>Public Conversation - Inclusive Commissioning and Curating</b> Holly Tebbutt and Lucy Keany, Shoir Mavlian, Juliette Buss, Claire Wearn. Chaired by Kate Adams <b>12.00 - 12.40</b>	<b>Drawing-as-conversation workshop</b> Tim Corrigan and Patricia Finnegan <b>12.00 - 12.50</b>	<b>Non-verbal communication activity</b> Melanie Juckes and Peter Standen <b>12.00 - 12.30</b>	<b>A Tale Of Mother's Bones:</b> Gallery Walkabout Lucy Walker and Tom Lepora <b>12.00 - 12.30</b>
12.30	<b>LUNCH</b> served in the Café Bar between 12.30- 1.20				
1.10		Peer Support Network Charter of Ambition and Rights for Personalisation Launch Esther Springett			
1.20	<b>RIGHTS</b>	<b>Rights and Human Behaviour</b> Vivien Cooper			
1.45	Verbal/Non-Verbal Conversations	<b>Quality Standards for People with Complex Needs - Why it Matters</b> Michael Fullerton <b>1.45 - 2.10</b>	<b>Open discussion for the Charter of Ambition and Rights for Personalisation</b> Esther Springett, Mandy Rapisarda <b>1.45 - 2.30</b>	<b>Rights and Creative Accessibility - Solar Printing Photography workshop</b> Tim Corrigan and Patricia Finnegan <b>1.45 - 2.35</b>	<b>A Tale Of Mother's Bones:</b> Gallery Tour TBC <b>1.45 - 2.15</b>
2.20	<b>BREAK</b> Tea and coffee available in the Main Foyer 2.20 – 2.50				
2.50	<b>REPRESENTATION</b>	<b>The Lived Experience</b> Richard Williams			
3.15	Verbal/Non-Verbal Conversations	<b>Collaboration, Agency, Communication, Representation</b> Mikhail Karikis	<b>Who shut the door? We'll open it! A talk about shows, jobs, luck and love</b> Sarah Hamlett, Kate Harper, Nicole Duchesne and Christine Howland	<b>Makaton is for fun too</b> Jackie Powell	<b>A Tale Of Mother's Bones:</b> Gallery Walkabout Lucy Walker and Tom Lepora <b>12.00 - 12.30</b>
3.50	<b>PANEL DISCUSSION</b> and round-up contributed from attendees	Panel TBC			
4.20	<b>CLOSING REMARKS</b>	<b>Introducing Explorers 2019</b> Kate Adams			
4.30	<b>DRINKS RECEPTION</b> in the Main Foyer				

## **INFORMATION**

[www.projectartworks.org](http://www.projectartworks.org)

[www.explorersproject.org](http://www.explorersproject.org)

## **SOCIAL MEDIA**

@projectartworks

#EXPLORERSproject

#EXPLORERS2019

## **CONTACT**

Arch 3, Braybrooke Terrace, Hastings, TN34 1TD

01424 423 555

[martin@projectartworks.org](mailto:martin@projectartworks.org)

[info@projectartworks.org](mailto:info@projectartworks.org)



Supported using public funding by  
**ARTS COUNCIL  
ENGLAND**

**phf** Paul Hamlyn  
Foundation

 **DE LA WARR  
PAVILION**

**projectart works**