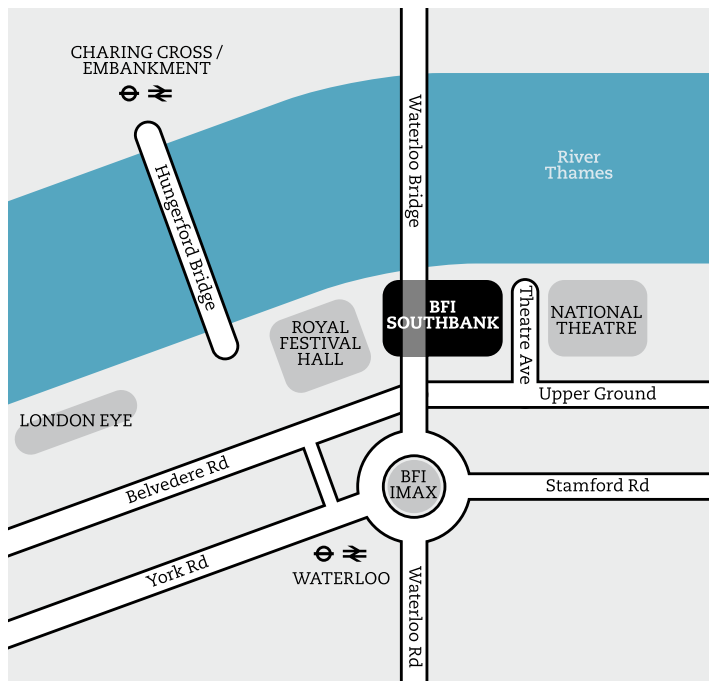


# **BFI Relaxed Cinema Screenings Guide**

## GETTING HERE

BFI Southbank is situated next to the river underneath Waterloo Bridge. Waterloo station is the nearest tube station.



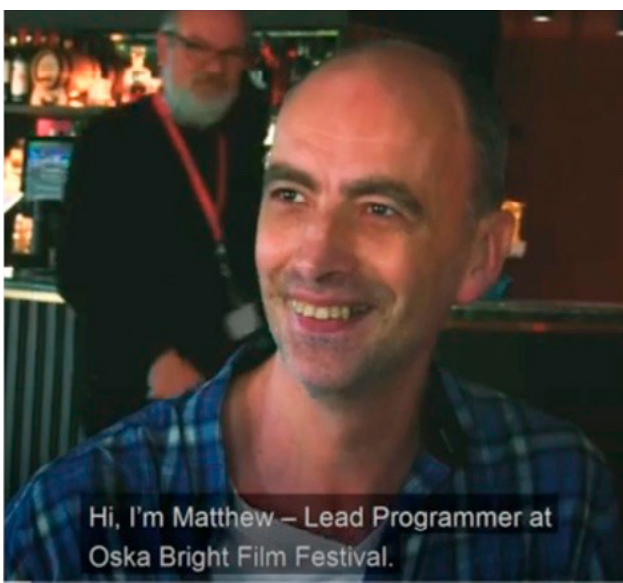
The entrance to all screens is through the main Lightbox entrance on Theatre Avenue.



Some aspects of the customer journey at BFI Southbank have changed temporarily due to essential maintenance works. The current Covid safety advice for visiting BFI Southbank can be found <https://whatson.bfi.org.uk/Online/article/keeping-you-safe>



Here is a video guide of the venue produced by Carousel. Please be aware that some of the routes may look different because of our essential maintenance works. [youtube.com/watch?v=dIE3k\\_HRU30](https://www.youtube.com/watch?v=dIE3k_HRU30)



## TICKETS

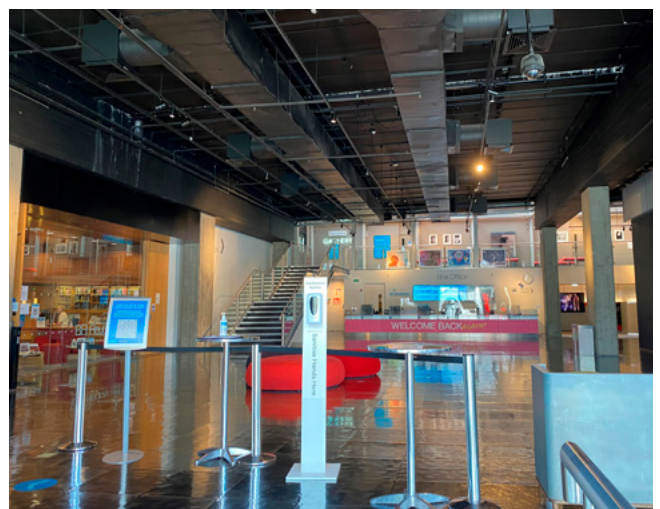
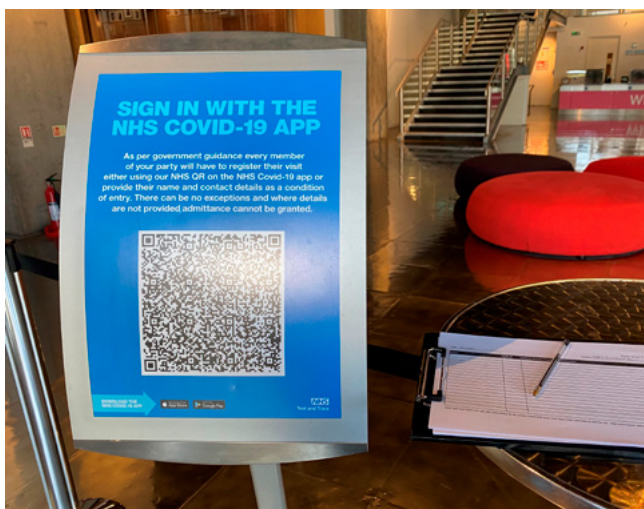
To book Access Tickets or ask any questions about access, please call our dedicated box office number on 020 7928 3232 or send an email to the box office [box.office@bfi.org.uk](mailto:box.office@bfi.org.uk). Tickets will be delivered to your smartphone or tablet.

If you prefer the Box Office counter is now open for walk-ups. You will be able to visit the box office between 11:30–20:30 daily.



## NHS TRACK AND TRACE

We recommend that people who attend the cinema sign in on the NHS Track and trace (which you can download here: <https://www.nhs.uk/apps-library/nhs-covid-19/> ).



There will be a sanitiser available in the foyer for you to use before you enter the cinema.



## FOOD AND DRINK

You can purchase food and drink from BFI Riverfront and take it into the cinema. You are also welcome to bring your own but hot food is not allowed.

BFI Bar & Kitchen is open. For more information about the Food and Drink offer at BFI visit <https://bit.ly/3nZnhE4>.



BFI Riverfront



BFI Bar & Kitchen

## TOILETS



Toilets near NFT3 cinema.

These toilets have paper towels and no hand dryers.



At the rear of NFT3 the area is much darker and can be a little colder.

## SCREENING ADJUSTMENTS

Our Relaxed Screenings and Events take place in NFT3 and the Blue Room.

The doors will open 30 minutes before the advertised screening time.



NFT3 entrance is now between the shop and the library

There are wheelchair spaces available in all auditoriums. As you enter the venue you can ask a member of staff about wheelchair access.



## AUDITORIUMS



NFT3



Blue Room

Our current Relaxed Screening adjustments are:

- Customers can select their seats when they arrive in the auditorium. You may sit with your family/friendship group or there are some single seats if you prefer.
- Please leave space between yourself and other groups and retain your selected seats for the duration of the performance if possible.
- We encourage you to wear a face covering if you are able to.
- You are welcome to take refreshments into the auditorium but no hot food please.
- Doors will open 30 minutes before the screening.
- No trailers will be shown.
- The programme will be introduced.



- Our house lights will remain on a low level throughout the screening, and the volume will be turned slightly down.
- You will be able to leave the auditorium and return during the screening.
- There will be a safe space to use if you need to leave the auditorium.
- You will be able to make some noise.
- Please ask us if you need help

## QUIET SPACES

If you need a quiet area you can leave the cinema by the back doors where there will be an area to sit and relax.



There is a quiet space at the rear of NFT3.

There will be a short introduction before the film starts. If you have any questions you can talk to one of the BFI staff members who will be at the screening.



Maggi Hurt



Josh Glenn



Sian Harris



Judith Ward



Rheima Robinson

One of us will be around for the screening if you would like to talk with us.

*The End*