

## Claudia Williams and Charlotte Hollinshead, ActionSpace

Activity: Collaborative Drawing in the Level 1 Main Space at 11.00 on Tuesday 28 November.



Claudia Williams creates striking sets of bold graphic drawings, influenced by popular cultural imagery and design of the 70's and 80's. TV programmes, shop signs and food logos feature alongside portraiture and music. Claudia's passion and exceptional knowledge for Reggae and R&B music feature across all her artwork. Many drawings morph self-portraits and family members into musicians including Bob Marley, Dionne Warwick and Al

Green. Writing features throughout the work. Claudia includes her name and the date the work created with song lyrics and names of people. Claudia is prolific, producing up to twenty drawings a day, with each drawing set carefully in curated layouts on her studio wall.

ActionSpace is a London based visual arts organisation that supports learning disabled artists. They seek out and unlock talent, create opportunities and enable learning disabled artists to realise their potential.

[actionspace.org](http://actionspace.org) | [@ActionSpace](https://twitter.com/ActionSpace)

## Kate Adams and Tim Corrigan, Project Art Works

Event welcome and introduction in the Level 1 Main Space at 13.00 Tuesday 28 November.

Kate will be part of the Support Collective conversations both days.



Kate Adams MBE is an artist, advocate and activist. She is Artistic Director & CEO of Project Art Works and has initiated and curated many responsive, collaborative projects with people who have complex support needs, families, caregivers, artists and galleries. Kate co-founded Project Art Works in 1997 to explore an expanded concept of art that was and continues to be influenced by Paul Colley, her son, who amongst many amazing attributes has complex support needs. Their work embraces personalised studio practice, peer support and award-winning films, art actions, installations and exhibitions. Kate's

practice disrupts preconceptions about what people can and can't do, who they are and how they live, revealing other ways of being in and seeing the world.



Tim Corrigan is an artist filmmaker and Creative Director at Project Art Works. He has extensive experience of video production, both as a director, cameraman and editor. Tim has worked in collaboration with Kate Adams for over 20 years in the development of Project Art Works and its studio practice, and in shaping its use of moving image: film is used both as a way of establishing an environment within a creative context and to support activism and advocacy by enabling neurodivergent people to reposition themselves and the way they are seen in society.

Project Art Works is the lead partner of the Explorers Project and is a collective of neurodiverse artists and activists based in Hastings.

projectartworks.org | @projectartworks | @kate\_c\_adams\_

## Tess Gilmartin, Tom Rooney, Lewis Scott and Becky Waite from Blue Room, the Bluecoat

Artist presentation and conversation in the Level 1 Main Space at 14.00 on Tuesday 28 November.



Tess Gilmartin is a Wirral-based visual artist, creating drawings and paintings inspired by the world around her. Using bright colour palettes and gestural mark making, Gilmartin makes art to celebrate the things she loves, such as people, animals and flowers. She is currently working towards a public commission for the Bluecoat to be launched in Spring 2024. Gilmartin is a member of Blue Room at the Bluecoat and is part of the *Studio Me* artist development programme. She is also part of the Options

for Supported Living community.



Tom Rooney is a Wirral-based visual artist, creating drawings, paintings and collages that re-examine buildings that are familiar to him, most notably the Bluecoat and BBC Radio Merseyside. Rooney is fascinated by architecture and the way buildings are 'laid out' with an interest in seeing things from different angles and perspectives.

Rooney is a member of Blue Room at the Bluecoat and is part of the *Studio Me* artist development programme. He is

also part of the Options for Supported Living community.



Lewis Scott has been a member of Blue Room for almost a decade. During that time he has shared his organisation and facilitation skills by planning and delivering creative workshops with a wide range of different groups. Scott has supported the Bluecoat's participation programme to engage with children and families through the *Out of the Blue* project for primary school children. Scott is an experienced self-advocate both with Blue Room and as part of Mencap Liverpool and Sefton.

Since graduating from Manchester School of Art, Becky Waite, Blue Room Creative Manager, has worked within the landscape of inclusive arts for over a decade. Collaborating creatively with Blue Room artists at the Bluecoat since 2010, she now supports a team of artist facilitators, assistants and volunteers to deliver a high quality, year round programme of

inclusive arts. Her role is particularly focussed on supporting learning disabled and neurodivergent artists with self-advocacy in the wider arts sector.

Blue Room is the Bluecoat's inclusive arts project with learning disabled and neurodivergent adults. We support our members to explore contemporary arts and heritage, create and share their own work. Blue Room members have access to resources such as the gallery and print studio and collaborate with local and international contemporary artists. Blue Room artists are an integral part of the creative community at the Bluecoat, supported by a dedicated team of facilitators, assistants and volunteers.

*Studio Me* is our programme of professional development for artists, offering time, space, tailored creative support and mentoring sessions with other artists who share a kinship with their practice. The project aims to explore and negotiate the barriers many learning disabled and neurodivergent artists face to progression including lack of access to inclusive arts education, professional networks, paid work and opportunities to exhibit. In addition to nurturing artists, the project aims to connect with and support curators and arts organisations who may be interested in exhibiting and commissioning the work of under-represented artists.

[thebluecoat.org.uk/projects/blue-room](http://thebluecoat.org.uk/projects/blue-room) | [@blue\\_room\\_inclusive\\_arts](https://twitter.com/blue_room_inclusive_arts) | [@the\\_bluecoat](https://twitter.com/the_bluecoat)

## **Amanda Sutton and Sarah Boulter, Venture Arts**

Conversation: Collaboration in practise in the Level 1 Main Space at 15.30 Tuesday 28 November.

Amanda Sutton has been the Director of Venture Arts, Manchester since 2007. Venture Arts is a supported studio working with learning disabled and neurodivergent visual artists. She has been responsible for leading the organisation through significant change from a small community group to one of Manchester's leading visual art studios, with national repute. She is committed to building equity in the arts with a particular emphasis on access for disabled artists. As a result of their work, artists working from Venture Arts studio are now showing and selling work across the globe, including Tate, the Whitworth, Royal Academy, Royal Society of Sculptors, the Manchester Contemporary, Frieze and the Government Art Collection. She is a member of Manchester's Cultural Leaders Group, a trustee at Grizedale Arts as well as sitting on the advisory panel of the Granada Foundation.

Sarah Boulter is a curator and creative producer based at Venture Arts. She works with the hyper local, national and international, focussing on collaborative work, inclusivity and artist development. Sarah's own artistic practice is also focused on international and collaborative working.

Venture Arts is a progressive visual arts charity, working alongside neurodivergent and learning disabled artists to create and showcase exciting new contemporary visual art.

[venturearts.org](http://venturearts.org) | [@venturearts](https://twitter.com/venturearts)

## Ellie Page, Outside In

Activity: Outside In Artist Support Day in the Front Room, Ground Floor from 11.00 on Tuesday 28 November



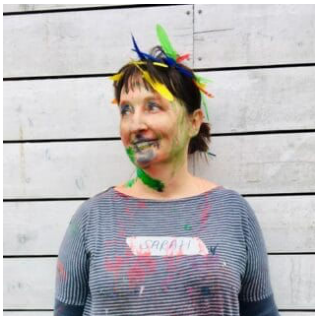
Ellie Page is the North West Hub Manager at Outside In. Outside In provides a platform for artists who encounter significant barriers to the art world due to health, disability, social circumstance, or isolation.

The charity provides a digital platform for its artists to show their work and three programmes of activity: artist development, exhibitions, and training. These activities, supported by fundraising and communications, all aim to create a fairer art world by supporting artists, creating opportunities, and influencing organisations.

[outsidein.org.uk](https://outsidein.org.uk) | @outsidein\_uk

## Sarah Dunne & Georgie Scott, Project Art Works

Conversation: The Support Collective in the Residential gallery space on the Ground floor at 13.30 Tuesday 28 and 12.00 on Wednesday 29 November.



Sarah Dunne works across the Project Art Works programmes as an artist facilitator on the Art. Freedom. Care. Programme for adults, co-lead artist on the Art Breaks programme for children, young people, their families, and carers, and is the Support Collective Lead. Sarah is also an advocate, activist, poet, mediator, and teacher. These roles are interconnected by enabling self-expression and empowering individual creativity.



Georgie Scott is a photographer and artist with a degree in photography from the London College of Printing. People have always been central to Georgie's work, first as a press, travel and portrait photographer and later whilst working with Save the Children, ActionAid, British Red Cross and Age UK amongst others.

Georgie has worked with Project Art Works since 2016 as artist facilitator on the Explorers and Art Freedom Care programmes and as a Lead artist on Art Breaks programme. Georgie also has the role of Project & Family Support Officer for the Support Collective.

The Support Collective at Project Art Works is a group of people with lived experience of disability, family carers, support workers, and representatives from health and social care. We collectively share the aim of working towards person-centred and inclusive models of support and care, and protecting the rights of people with support needs.

[projectartworks.org](https://projectartworks.org) | @projectartworks



## Aida Ashall, Project Art Works

Artist Residency on Level 1 from 11.00 on Tuesday 28 and Wednesday 29 November.

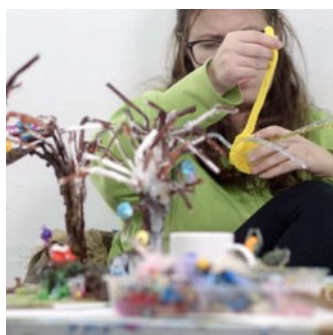


Aida Ashall is a painter who selects vibrant colours to energetically cover the entirety of whatever surface she has chosen to work upon. Using a variety of brushes to make her marks, Aida delicately reaches into crevices and corners on the rear of a canvas frame as well as making broad, gesturing brush strokes that dance across flat surfaces. Aida works predominantly on canvas frames, but also on paper, sculptural objects, and in deconstructed sketch books.

[projectartworks.org](http://projectartworks.org) | [@aidaashall](https://twitter.com/aidaashall)

## Gabby R, Project Art Works

Artist Residency on Level 1 from 11.00 on Tuesday 28 and Wednesday 29 November.



Gabby R is a prolific maker whose work demonstrates mastery of less conventional materials including hot glue, pipe cleaners and found objects. Through the assemblage of these basic components, Gabby creates vividly imagined characters that mimic or embellish creatures found in the natural world. Alongside her three-dimensional work, Gabby uses collage, drawing and painting to document the creatures she creates and their unique features and qualities.

[projectartworks.org](http://projectartworks.org) | [@projectartworks](https://twitter.com/projectartworks)

## Issy Wheeler and Alexandra, Artists

Artist Residency on Level 1 from 11.00 on Tuesday 28 and Wednesday 29 November.

Issy and Alexandra are key members of Liberdade, the North East-based radical dance and theatre group for people with disabilities, and part of Gosforth Civic Theatre. Project Art Works first collaborated with Issy and Alexandra when they joined us for creative visual arts workshops with Liberdade in July and we have worked with them a number of times since, seeing an exciting development of both artists work.

## Art Riot Collective

Artist Residency on Level 1 from 13.00 on Tuesday 28 and from 11.00 on Wednesday 29 November



Art Riot Collective hope to bring a conversations and connection though mark making and being present to share our developmental journey so far. From a realisation that we need more inclusive supported



studios in Coventry for artists who consider themselves to be disabled and/ or neurodivergent to becoming a strong Collective, building opportunities and creative growth. Artists who will be taking part are Colleen Garrigan, Richard Raponi Darren Enticott, Ketan Mistry, Roxanne Smith, Matthew Wigmore, Kyle Wilson, Kyla Craig, Stephen Rubacki, Bryony Lines and Tom Simkins.

[artriotcollective.com](http://artriotcollective.com) | [@artriotcollectivecoventry](https://twitter.com/artriotcollectivecoventry)

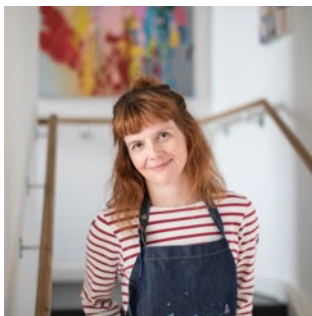
## **Annis Joslin and Patricia Finnegan, Project Art Works**

Creative Collaboration in the Level 1 Studio at 15.00 on Tuesday 28 and 12.30 on Wednesday 29 November.



Annis Joslin is an artist and filmmaker with a collaborative approach, making work through conversations and participatory encounters with others exploring lived experience in a playful and reflective process leading to lens-based digital artwork.

Annis has shown work in the UK and internationally with projects and commissions with organisations including People United, The Royal College of Physicians, The National Trust, Tate Exchange, The Women's Library, and The Walker Art Gallery, Liverpool. She is lead artist at Project Art Works, co-director of Corridor, and collaborates as Cole & Joslin.



Patricia Finnegan's practice focuses on elements of painting and printmaking and she works from drawings and photographs to create layered images on wood, paper and canvases. There is a focus in her work based around nature and the human form. In 2010 Patricia completed an MA in Art and Design in Education. Through this she was able to combine research with her work as an artist facilitator. This process has strengthened her evaluation and research skills in all the types of projects that she works on. Patricia continues to explore this field as she feels that the arts can be

essential to mental, emotional and physical wellbeing. Patricia is Artist Development Lead at Project Art Works.

[@annisjoslin](https://twitter.com/annisjoslin) | [@patriciafinnegan2014](https://twitter.com/patriciafinnegan2014)  
[Projectartworks.org](http://Projectartworks.org) | [@projectartworks](https://twitter.com/projectartworks)

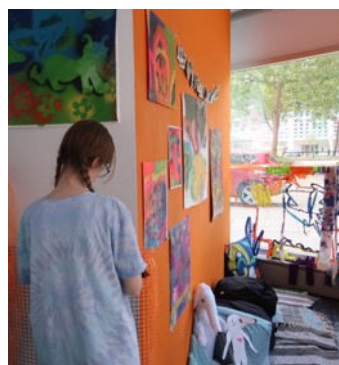
## Georgia Akbar, Timi Williamson-Webber, Sarah Hunt, Cali Waller, Sophie Bennett and Rosie May from Our Studio, MK Gallery

Artist Residency: Making and conversation with artists from Our Studio on Level 1 from 11.00 Tuesday 28 and Wednesday 29 November.



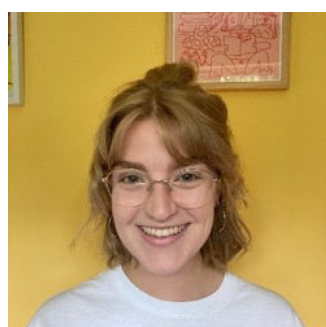
Georgia Akbar and Timi Williamson-Webber have been involved in the development of Our Studio since it started in early 2022. Along with two other young people and the IPA team, they formed part of a co-research group visiting existing supported studios and experimenting with different workshop formats and pop-up studio environments. Georgia is an artist and facilitator specialising in inclusive approaches to visual arts and filmmaking. Timi is interested in

lots of different materials and has recently been exploring artmaking with animation, sound and repetitive marks and patterns.



Sarah Hunt and Cali Waller both joined Our Studio later in 2022 as the programme grew in capacity and frequency. Sarah is a participatory artist working in various media and specialising in working with those who may be excluded from the arts. Cali has a strong creative identity and is passionate incorporating her personal interests including animals, especially greyhounds,

bright colours and textiles into her work.



Collaboration: Our Studio artists meet monthly at MK Gallery, supported by the Inclusive Practice in the Arts (IPA) team. Together they explore different materials and creative processes, alongside personal interests, in a supportive and sociable space which captures both the professionalism of supported studios, and the playfulness of the IPA Art and Us family

programme. Georgia, Sarah, Timi and Cali are attending In Process as representatives of the wider Our Studio collective, showcasing some of the practices and values they have developed together and, highlighting the strong bonds and visual outcomes that were produced during their Summer Takeover project in August 2023. Our Studio is run by Sophie Bennett – Producer of Inclusion (IPA) and Rosie May – Inclusion Coordinator (IPA) of MK Gallery.

## The Twisting Ducks Theatre Company

Artist presentation: A series of short films and presentations from artists from the company in the Level 1 Studio at 14.00 on Tuesday 28 November.



The Twisting Ducks Theatre Company CIO are a collective of artists who have learning disabilities and autistic artists from across Tyne and Wear and Northumberland. Established in 2007, The Twisting Ducks uses theatre and participatory arts to enable people with learning disabilities and autistic people to have a voice, to raise awareness about inequalities they face, and to strengthen communities.



Through their outreach work, The Twisting Ducks uses drama as an interactive, safe approach to help people explore possible solutions to real life barriers and dilemmas, and to express thoughts and emotions that they might otherwise struggle to communicate.

As part of their goal to effect wider social change, the organisation also delivers performance-based training and produces awareness raising films and resources. For example, the group are regularly commissioned by NHS stakeholders to produce thought-provoking work that champions inclusion and promotes best practice amongst the health and social care workforce.

They will be joined by Marc McAndrew – Artist, Rachel Lynch – Artist , Cat Catizone – Drama Facilitator , Victoria Smith – Artist, Kieran Harland – Artist, Ema Lea Daggett – Senior Film Worker, Phil Coghill – Film Worker Artist.

[thetwistingducks.co.uk](http://thetwistingducks.co.uk) | [@twistingducks](https://twitter.com/twistingducks)

## Conor Devlin-Powell

*What I'm Hiding From You* is will be showing in the Cinema Space as part of the Explorers Film Festival



Conor Devlin-Powell is a London-based filmmaker and multi-media artist and writer. Their work incorporates illustration, moving image and humour to challenge perspectives on disability, neurodiversity and mental health and takes a surreal genre-based approach. They have worked with organisations including Theatre 503, the Royal Court, BFI Film Academy and Fully Focused.



*What I'm Hiding From You* is a new short film which utilises the horror genre overlaid with beautifully intricate rotoscope animation to explore the act of masking. Commissioned by Autograph and directed by emerging filmmaker Conor Devlin-Powell, it features an all-neurodivergent cast and crew. The film will screen as part of the official selection for the Oska Bright film festival in 2024.

[strangeworld11.com](http://strangeworld11.com) | [autograph.org.uk](http://autograph.org.uk)

## Dexter Mclean and Livvy Murdoch, Autograph

Artist presentation and conversation at 10.30 in the Level1 Main Space on Wednesday 29 November



Dexter McLean is a London-based photographer. Aged nine, Dexter moved from his home in Kingston, Jamaica to the UK. Diagnosed with Cerebral Palsy as a child, McLean's documentary and portrait photography is concerned with addressing fundamental flaws in representations of disabled people.

McLean was the first person in his family to attend university, graduating with a master's in photography from Middlesex University in 2020. His work was shortlisted for the Taylor Wessing Prize at the National Portrait Gallery in 2016. In 2021 he self-published his first monograph *Tower Avenue* revisiting the community in Jamaica where he grew up. Autograph was established in 1988 with the mission to champion the work of artists who use photography to highlight questions of identity, race, representation, human rights and social justice. Through doing so, we invite people to explore the creative and critical power of visual representation in shaping our understanding of ourselves and of others.



Livvy Murdoch is an arts educator and activist. They manage Autograph's learning programmes and digital content, with a particular focus on supporting, sharing and producing the work of disabled and neurodivergent artists. Previously, Livvy has worked on programmes at Camden Art Centre and Whitechapel Gallery.

[dextermclean.com](http://dextermclean.com) | [@dextermcleanphotography](https://www.instagram.com/dextermcleanphotography)  
[autograph.org.uk](http://autograph.org.uk) | [@autographabp](https://www.instagram.com/autographabp)

## Kate Watson with Photoworks

Activity with Kate Watson: Strategies for engaging with photography at 10.30 in Level 1 studio on Wednesday 29 November.



Kate Watson is a visual artist, researcher and educator, currently living and working in London. Her practice combines collaboration, education, and social engagement, working in photography, print and text. Kate is an Associate Lecturer at London College of Communication and currently runs Terms of Engagement, a research programme of artist-led workshops with photography students and arts practitioners which critically explores the language of participation in socially

engaged photography practice.

## Lauren Joy Kennett with Photoworks

Film Screening featuring Lauren Joy Kennett followed by a discussion around making artist commissioning equitable led by the Photoworks Team in Level 1 main space at 12.00 on Wednesday 29 November.

Lauren Joy Kennett is an autobiographical artist working with photography, hand cut collage and text.

Lauren's artistic practise focuses on memory, dreams and nightmares as a way to understand and process her experiences of living with undiagnosed autism.

Photoworks champions photography for everyone. We are an international platform, global in reach, and have provided opportunities for artists and audiences since 1995. Our programme brings new experiences to audiences and opens up new ways to encounter photography.

katewatson.org | @kate.watson.uk  
@imthatwoman\_  
@photoworks\_uk | photoworks.org.uk

## Sam Jones, Intoart

Discussion about studio practice in Level 1 main space at 13.00 on Wednesday 29 November.



Sam Jones is co-founder and Programme Director of Intoart. He works with artists in the Intoart Studio to develop artistic practice and public programmes.



Intoart's full time studio programme spans art, design & craft. Based in Peckham with onsite production facilities for print, textiles and ceramics Intoart challenges the under-representation of people with learning disabilities through an integrated programme of art education, professional development and innovative public programming.

[Intoart.org.uk](http://Intoart.org.uk) | [@intoart\\_uk](https://twitter.com/intoart_uk)

## Barry Anthony Finan and Elliott Flanagan, Venture Arts

Performance: The Hand That Makes The Sound in the Level 1 Main Space at 14.00 on Wednesday 29 November.



Based at Venture Arts studios for many years, Barry defines his work as "WRRIGHHTINNGSERRSS", long streams of repeated letters, names and phrases and elongated words. His words are scripts of personal history and future dreams, seemingly all in motion.

Barry has exhibited widely, at TJ Boulting London, Manchester Contemporary Art Fair, British Ceramics Biennial, The Lowry & The Whitworth.

In his own words, "II LIKE DOINNG WRRIGHHTINNG ANND DRRAWINNG. HAVE A ACTTING PAID JOB ONN TELEVISSION TO DO LOTSS OFF TRRICKSSERRSS JUMMPONN TELEVISSION PICTTURRESSERRSS TO LOTSS OFF GOOD MONNEY TO SPENND ANND BUY."



Elliott Flanagan is a text, moving image and sound artist based in the North West, UK. His practice explores different forms of writing and text based work. Recently he exhibited Something Exotic and Euro, an immersive installation of new work at The Whitaker Museum & Art Gallery incorporating poetry, spoken word, field recordings, photography, film stills and a curated soundtrack. Elliott is resident at Slack's Radio and this work was in conjunction with his radio show, Home Recording.

His poetic book Blancmange was commissioned for A Modest Show 2022. He has exhibited widely including HOME, Manchester (2021), Venice Biennale (2019) and Begehungen, Chemnitz (2019)

[venturearts.org](http://venturearts.org) | [@venturearts](https://twitter.com/venturearts)

## Beacon Films

Beacon Films will present a showcase of short films in the Level 1 cinema space on Wednesday 29 November at 15.00.



Beacon Films is a Newcastle based production company of disabled, autistic and neurodivergent filmmakers. Our unique approach leads to films that are as memorable and entertaining as they are informative and awareness-raising.

Through our training, we enable learning disabled, disabled, autistic and neurodivergent people to discover and develop filmmaking skills and talents.

Working alongside industry mentors, our most experienced filmmakers take part in professional commissions, working with clients and creative partner agencies to produce outstanding work that is shown all over the world.

[beaconfilms.org.uk](http://beaconfilms.org.uk) | [@BeaconFilmsCIC](https://www.instagram.com/BeaconFilmsCIC)

## Alex Billingham

Artist Presentation with Outside In in the Level 1 Studio at 14.00 on Wednesday 29 November.



Visual arts / Live art / Experimental theatre & film / Digital are the core of Alex's practice.

West-Midlands based, Alex works internationally, often pulling from their own lived experience of being Disabled, Trans, Neurodiverse and Queer, seeing how these identities collide and intermingle.

Alex's practice constantly adapts to whichever medium best delivers the work. Research and experimentation are at the core of their practice, learning any skills necessary to take ideas forward while allowing time for the research to bleed back into their work.

Survival underpins Alex's work; finding better ways for us all to survive into the future.

[alexbillingham.co.uk/word-soup/](http://alexbillingham.co.uk/word-soup/) | [@billingham\\_alex](https://www.instagram.com/billingham_alex)



## Alan Van Wijgerden

Alan will be documenting the Explorers Event by interviewing attendees and contributors on film.



Alan spent his youth in the Special School system and completed an MA in Design and Digital Media in 2007. He is a prolific filmmaker-photographer based in Coventry, UK, with a particular interest in collecting and archiving historical experiences, events and social change. He is a passionate community activist with an encyclopaedic knowledge of cultural events in Coventry.

## Jazz Moreton (online contributor)



Jazz Moreton is an interdisciplinary artist who has multiple disabilities as a result of surviving a stroke as a teenager. She strives to use her enthusiasm for the Arts to create work that ignites action and discourse around the inequalities that people with disabilities regularly endure. Since graduating with First Class Honours in Fine Art in 2017, she has worked in performance, audio, and traditional visual arts in the UK and Europe. Jazz is

passionate about using her experiences as a person with multiple disabilities to create positive social change. Are you going to try to stop her?

## Ashok Mistry (online contributor)



“Every Artwork I have created has started with some form of writing – usually a poem. The writing locates the intention of my work and plays like a mantra in my mind. My neurology and creative approach generates a myriad of creative outputs in a range of media that perhaps appear disconnected. My work is interdisciplinary – primarily visual and sculptural works using many media, writing as a critical tool, and

performance as a convergence and an enacting of the many processes of my work.

My work is nourished by actively engaging people to feed a work from different perspectives with source data or actively being part of the work. Looking beyond the surface traits such as identity I try to draw out both the rational and irrational that makes us who we are. Using play, metaphor, repetition, ritual and reflection I try to create artworks (or situations that lead to the creation of artworks) that sits as a mirror to contemporary human insecurities.”

## Martin Swan, Project Art Works

Martin will be performing in collaboration with Art Riot artists on Wednesday 29<sup>th</sup> November as part of the closing event at 15.00.



Martin Swan has 25 years experience performing and touring internationally as an electronic musician, with works performed/played or exhibited on national radio and television and in galleries throughout the UK.

## Sara Dare and Oliver Crowther, Project Art Works

Sara and Ollie will be facilitating creative workshops both days in the Ground Floor – Residential Gallery Studio Space



Sara Dare is a painter and installation artist. She has exhibited internationally and has coordinated and curated group exhibitions in London. Sara has a BA in Fine Art Painting and a PGCE in Art and Design. She applies these methodologies into her approach as a socially-engaged artist and collaborator. Sara has worked on a broad range of programming for Project Art works in a variety of roles and responsibilities, including; lead artist, project coordinator, engagement with family and carer networks, and collaborating with partner organisations.



Oliver Crowther is an artist working in range of media. Through his practice Oliver considers the role of the artist in contemporary society, exploring issues of agency and autonomy through image-making, sound and built environments. Before joining Project Artworks Oliver was a lecturer on the Hastings Foundation Course for four years before returning to education to study. He is currently enrolled on the MFA Fine Art program at Goldsmiths University, London.

## Andrea Philips, BxNU Institute, Northumbria University

As part of EXPLORERS we are organising an open conversation about disability, neurodiversity and art education on Wednesday 29<sup>th</sup> November in Level 1 Studio at 15.30.



The BxNU Institute organises the public programme for the long-term partnership between the Baltic Centre for Contemporary Art and Northumbria University, Newcastle. We have a strong commitment to discussing and researching cultural organisations' structures, participation agendas and cultural barriers.

## Irene Aristizábal, Baltic Centre for Contemporary Art

The Baltic team will be hosting curator tours around the gallery. Irene will be leading the curator tour of *Stepping Softly on the Earth* on Tuesday 28<sup>th</sup> November at 13.30.



Irene Aristizábal is Baltic Centre for Contemporary Art's Head of Curatorial and Public Practice since 2019. She has recently curated exhibitions by Jala Wahid, Carolina Caycedo, Judy Chicago, Ad Minoliti and Abel Rodríguez. She was the co-curator of *British Art Show 9* (2021–22), the biggest touring exhibition of contemporary art in the UK, organised every five years by Hayward Gallery Touring. Prior to Baltic, Irene worked as Head of Exhibitions at Nottingham Contemporary, where she curated exhibitions and commissioned projects by artists including Pia Camil, Steffani Jemison, Otobong Nkanga, Pauline Boudry/Renate Lorenz, Sun Ra, Danh Võ, Carol Rama and Asco. Recent group exhibitions include *Stepping Softly on the Earth* (2023), *Still I Rise: Feminisms, Gender Resistance* (2018–9), *States of America: Photography from the Civil Rights Movement to the Reagan Era* (2017), and *Rights of Nature: Art and Ecology in the Americas* (2015).

She was curator at the FRAC Nord Pas de Calais, Dunkirk, and was the recipient of the H+F Curatorial Grant (2010). Prior to that she co-directed the not-for-profit space Bétonsalon in Paris (2005–6). Irene is a member of the Acquisitions Committee for the Frac Grand Large in Dunkirk and was a member of the Advisory Board of La Galerie, Contemporary Art Centre in Noisy-le-Sec (2020–22). She was a jury for the Turner Prize in 2022 and participated in the British Council Commission Selection Committee for the British Pavilion at the Venice Biennale 2022.

## Emma Dean, Baltic Centre for Contemporary Art

Emma Dean is a curator at Baltic where she contributes to the strategic direction of the artistic programme, collaborating with international artists on exhibitions, commissions,



events and publications. As part of her role, Emma leads on Baltic's Residency Programme which supports artist's research and professional development through residencies at Baltic, partner institutions in the UK and internationally. The Programme includes *Emergent*, a hybrid residency for disabled artists developed in partnership with Shape Arts. She is currently working with Project Art Works on their exhibition *Residential*.

Emma's previous roles have included Exhibitions Organiser and Head of Exhibitions at MK Gallery, Assistant Curator and Exhibitions Assistant at Modern Art Oxford, and Curatorial Assistant at the Pitt Rivers Museum. She has curated exhibitions independently for the AV Festival, The Agency and Crisis UK among others. She has also mentored artists for various institutions. Emma is a former Trustee of the Chiltern Sculpture Trust, and has nominated and/or selected for the Paul Hamlyn Foundation Awards for Artists, The Arts Foundation Future Awards, AXIS, C-Art, the Hayward Touring Curatorial Open, The Other Art Fair and Durham University Art Prize. Emma is a jury member for the Aesthetica Art Prize in 2024.

## **Katherine Welsh, Baltic Centre for Contemporary Art**

Katherine will be leading the curator tour of *Ayo Akingbade: Shwe Me The World Mister* on Tuesday 28<sup>th</sup> November at 16.30.

Katharine Welsh is Curator at BALTIC. She contributes to the conception and delivery of the arts programme including exhibitions and public programmes, curating projects and events in collaboration with others. Her work has ranged from co-curating Turner Prize 2011 to first UK solo shows such as Holly Hendry *Wrot* (2017).

Recent projects include the public realm commission Jane and Louise Wilson *Suspended Island* (2019); *Rasheed Araeen: A Retrospective*, toured from Van Abbemuseum (2019); Imran Peretta *The Destructors*(2020) with Spike Island, Chisenhale and The Whitworth, and the solo commission by Pakui Hardware *Virtual Care* (2021). Ongoing projects in collaboration with colleagues include BALTIC Family Days and the BALTIC podcast.

## **Kinnari Saraiya, Baltic Centre for Contemporary Art**

Kinnari will be leading the curator tour of *Michael Rakowitz: The Waiting Gardens of the Northr* on Tuesday 28<sup>th</sup> November at 11.30.



Born in Bombay, India (1998), Kinnari Saraiya is an Artist-Curator, and Folk Dancer based in Gateshead, UK. She's currently working at the Baltic Centre for Contemporary Art as Assistant Curator. Her practice utilizes ancient and sensorial storytelling formats that transcend visual imperialism to reveal a hybrid, decolonial and feminist ecstatic truth.

She has curated various commissioned solo and group exhibitions, including *It was a Roadside Picnic: Beyond Black*



*Orientalism* (2021), *Time Travel Across Many-Worlds* (2022), *Sahej Rahal: Mythmachine* (2022), *Michael Rakowitz: The Waiting Gardens of the North* (2023) and *Stepping Softly on the Earth* (2023). She also curated the *Bioscope* at Baltic Centre for Contemporary Art (2022), Frieze Art Fair (2022) and The Bowes Museum (2023). In 2021, she was recognised to be of exceptional promise by the Arts Council England. She also won the Frieze x Deutsche Bank Curatorial Fellowship in 2021.

## **Amanda McMahon, Baltic Centre for Contemporary Art**

Amanda and Zoe will host a workshop in the Learning Lounge on Level 2 all day on Tuesday 28<sup>th</sup> November.

Amanda McMahon is the Head of Learning and Civic Engagement at BALTIC Centre for Contemporary Art (appointed December 2019). She leads on the strategic development and delivery of learning and civic engagement initiatives for schools, colleges and teachers that allows children and young people from all backgrounds to engage with and affect their world. Prior to her role at BALTIC, Amanda was a Primary Teacher Art lead for 11 years in two primary schools in Durham from 2008-2019. Alongside this, Amanda was the Director of Learning at Thought Foundation from 2017-2019 to where she developed and led a learning programme for schools. Amanda holds a PGCE in Primary Teaching with a specialism in Early Years and a BA degree in English and Film Studies.

## **Zoe Allen, Artist**

Zoe and Baltic will host a workshop in the Learning Lounge on Level 2 all day on Tuesday 28<sup>th</sup> November.

Zoe Allen an artist and educator, based in the North East and London. I make sculpture, structure, installation and painting informed by architectural forms and processes. The materials I use are very important to me - I think people have personal relationships to buildings and even small amounts of architectural material can evoke particular feelings or memories. My artwork has a strong relationship with architectural form and process and I am interested in the way people encounter the scale of buildings and respond to architectural space. In my work I think about shelter and habitat, memories and how we capture things. As an Educator, I believe that everyone has the power to make, design, create and talk about art. I use discussion and creative, interactive games and challenges which encourage both individual working as well as facilitating a visual dialogue between members of a group, addressing ideas of teamwork and ownership as well as creative and imaginative ways to develop art skills.. My workshops have included den building, mural making, investigative drawing, painting, mark-making, installation and sculptural / 3D work.

## Helen Charlton and Jessica Courtney Bennett, Project Art Works

Helen and Jessica will be hosting the online attendees to the Explorers Event.



Helen, Development Director at Project Art Works, has worked across social care and cultural sectors in project management, professional development, audience development, marketing, communications, and fundraising. She has a degree in Visual Culture, Arts and Cultural Management certificate, and a Diploma in Marketing.



Jessica is the Communications & Project Manager at Project Art Works. Jessica manages the communications across the Collective and runs the Art on Loan programme.

Jessica has an extensive background in project management and communications spanning the public, private and charity sectors. Jessica is particularly skilled in partnership working, finding solutions to problems and audience development.

[Projectartworks.org](http://Projectartworks.org) | [@projectartworks](https://twitter.com/projectartworks)

## Lucy Keany, Explorers Evaluator

Lucy Keany is the evaluator of Explorers II, along with her colleague Kara Jarrold. Lucy is an experienced programme manager and project producer working within the visual arts since 2008. She has a particular interest in progressive arts engagement practices, which address issues related to social justice and inclusion. Lucy has a wide range of experience designing projects for/with diverse communities, including children with complex support needs.

Until 2021, Lucy spent 8 years as the Public Programme Manager at Autograph; she now works independently on a range of projects.

## Peter Rooney, Makaton Signer



Peter Rooney is an Independent Makaton Tutor based in the North-east of England. Peter has used Makaton for nearly 40 years working with people with learning difficulties/disabilities, and with his 26 year-old, Billy (has Down's syndrome and on the autism spectrum). Peter has experience of support work, service management and training delivery roles with local authority and voluntary sector services. He has also taught abroad and

used Makaton in India. Peter runs a Signing Choir in Newcastle. His favourite sign used to be "GOLD", now it's "SOUL"!

[makaton.org](http://makaton.org)

Please use the following tags for your photos so we can share them:

@explorers\_\_project | #ExplorersProject

[www.explorersproject.org](http://www.explorersproject.org)

# EXPLORERSproject

Explorers is supported by



Supported using public funding by  
**ARTS COUNCIL  
ENGLAND**

